
T100 Single System Setup



echo1612 user guides

echo1612, Inc. – May 1, 2016



System Components (Single System)

echo Components

- ❖ T100 Replay System
- ❖ Router
- ❖ Battery
- ❖ Long Range (White Panel) Antenna
- ❖ Hard Shell Travel Case
- ❖ Splitter Cable
- ❖ Router Cable
- ❖ T100 Cable
- ❖ Battery Charging Cable
- ❖ Antenna Sticks (for Router)
- ❖ Mounting Bracket for Long Range Antenna
- ❖ HDMI Cable (25 Ft.)
- ❖ HDMI Cable (5 Ft.)

User Components

- ❖ Camera(s)
- ❖ iPad(s)
- ❖ Tripod

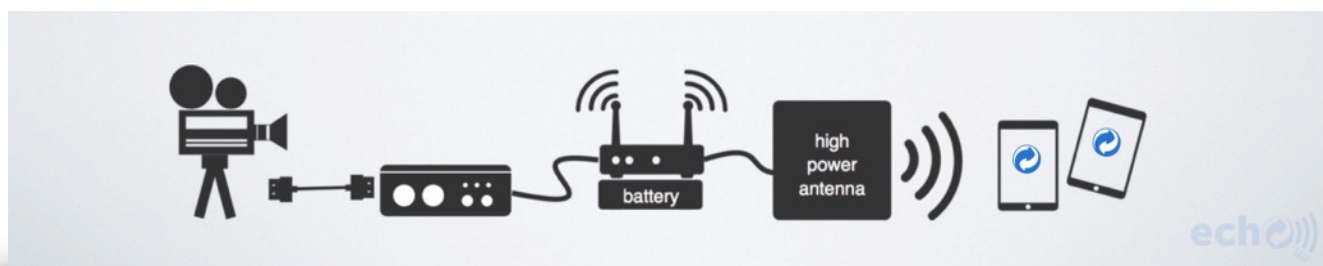
Add-On Components

- ❖ echo TV Cart

T100 Setup

STEPS

1. Plug in all devices.
2. Mount Long Range (White Panel) Antenna.
3. Turn Router ON.
4. Turn Camera ON.
5. Turn T100 power ON.
6. Connect to echo 5 - (school name) Network.
7. Connect iPad to T100.
8. Start RECORDING.



STEP 1: Plug In All Devices.

Users can plug in all devices easily by connecting each device by its COLOR CODED cables and device inputs/outputs.



STEP 1.A: Connect the **ORANGE end of Split Power Cable to the DC OUT port on the Battery.** The lights on the Battery should illuminate.

NOTE: Make sure the Battery is selected to **12 VOLTS** - *FAILURE TO DO THIS CAN CAUSE DAMAGE TO YOUR EQUIPMENT.*



STEP 1.B: Connect BLACK end of Split Power Cable to the DC IN port on the T100.



STEP 1.C: Connect **YELLOW** end of Split Power Cable to the power port on your Router.



STEP 1.D: Connect **GRAY** Ethernet Cable from LAN port on T100 to PORT 1 on the Router.



STEP 1.E: Connect **BLACK** Coaxial Cable to Long Range Antenna (LRA) & the Router.

NOTE: Coaxial Cable should be screwed into router antenna port closest to the power outlet.



STEP 1.F: Plug HDMI Cable Into T100 HDMI Input & Camera (use provided adapter).



STEP 2: Mount Long Range Antenna (LRA).

Users can mount the Long Range Antenna to any tripod or structure with the included hardware.

NOTE: THE LRA MUST BE POINTED DIRECTLY AT IPADS ON SIDELINE.

The LRA should NOT be leaned up against the glass in the booth. If possible, it should be completely clear of any enclosures and any other obstacles between the antenna, router and the iPads.



STEP 3: Turn Router ON and wait for the Power, 5.0, 2.4, and Port 1 LEDs to light up.



STEP 4: Turn Your Camera ON.

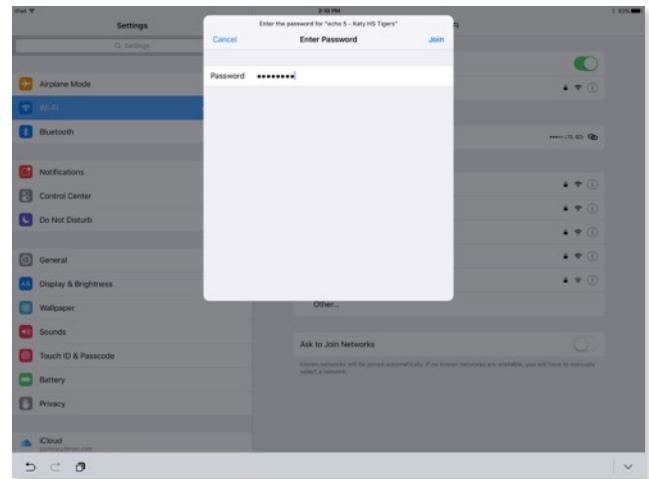
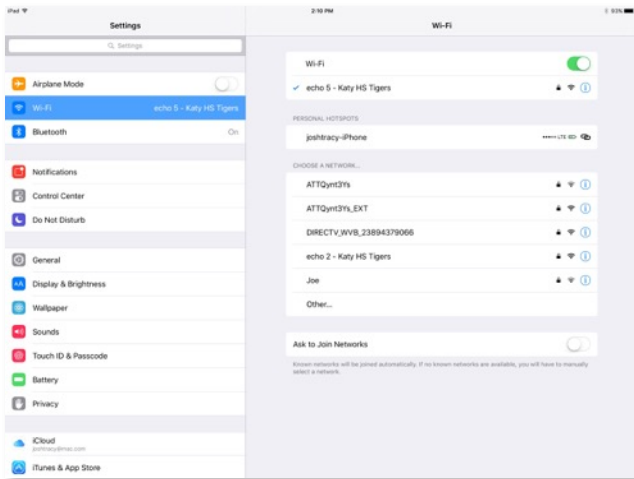


STEP 5: Turn T100 power ON and wait for STATUS light to turn solid Green.



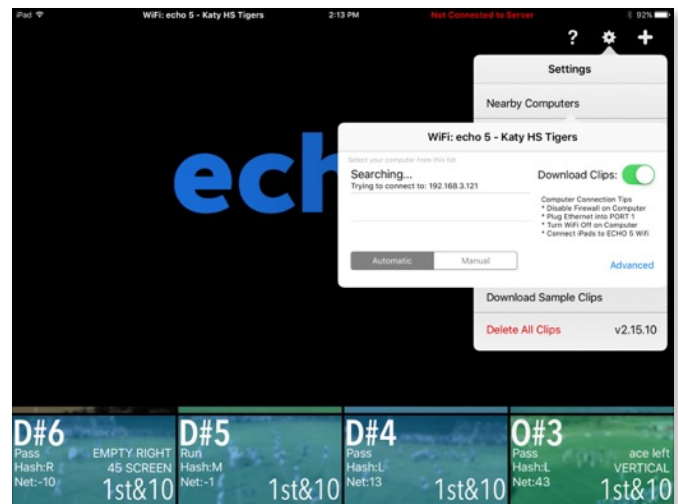
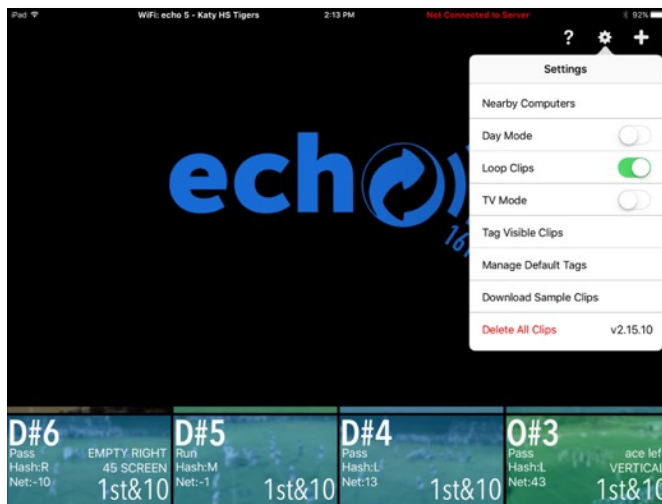
STEP 6: Connect to echo 5 - (school name).

Open iPad Settings > Open Wi-Fi > Select “echo 5 - (school name)” > Enter password



STEP 7: Connect iPad to T100. (See ECHO WIRELESS NETWORK Section)

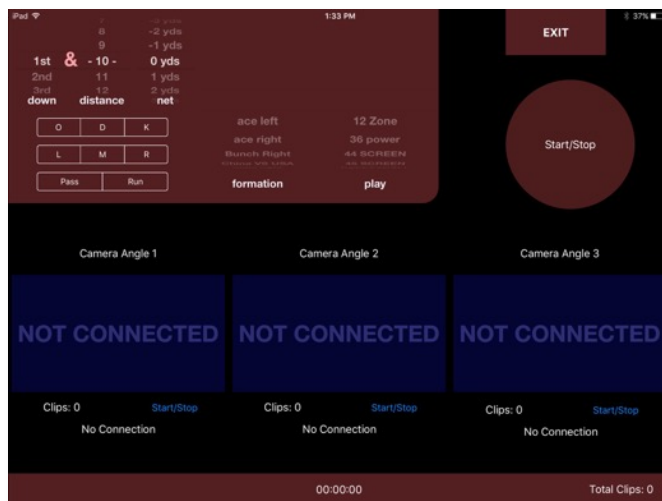
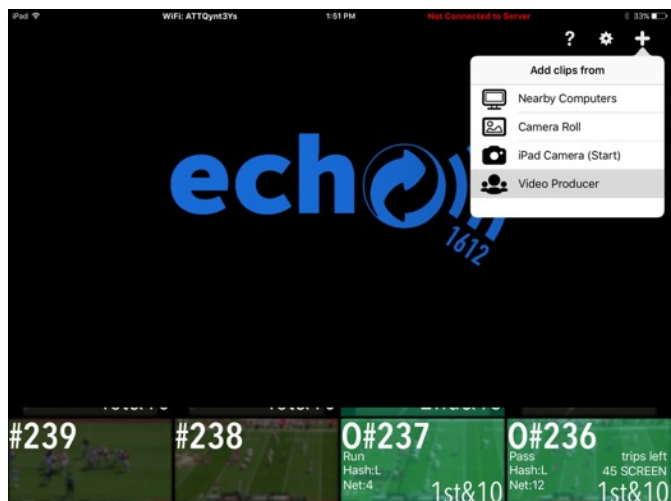
Open echo1612 app > Open Settings > Choose Nearby Computers > Select T100



STEP 8: Start RECORDING!

Users can record clips by using the “RECORD” button on the T100 or through the echo1612 app by selecting the “Video Producer” mode.

Open the echo1612 app > Choose Plus Symbol (top right corner) > Select Video Producer



echo Technical Support

echo Technical Support Hours:	7am - 7pm CST	Monday - Saturday
echo Extended Support Hours:	7am - 12am CST	Thursday
	7am - 12am CST	Friday
echo Technical Support Number:	1.405.896.6767	
echo Technical Support Email:	support@echo1612.com	

For any questions or concerns please do not hesitate to contact our helpful support staff!

We recommend that you contact us at least once during your initial system setup to ensure that we have the proper coach's contact information for your school for important updates.

For news and important system updates please have your staff and players follow us on social media!

- ★ [Twitter](#) @echo_1612
- ★ [Facebook](#) @echo1612
- ★ [Instagram](#) @echo1612